



Fitting Instructions

Revo Big Brake Kit 4/6 Pot Caliper 332/355/380 Disc

Fitting Difficulty



Dealer Fit Recommended

Contents

Description	
Revo by Alcon Caliper	2
Revo Complete Disc	2
Brake Pads	4
Brake Hoses	2/4
Brackets	2
Bracket Bolts	4
Bracket Washers	4
Brake Fluid DOT 5.1	2

Recommended Tools

Tools	Size
Ratchet	
Sockets	14, 20, 21mm
Hex Key	10mm
Torx Bits	T30
Spanner	11, 14mm
Brake Cleaner	



Before starting, please ensure that the battery is disconnected and you have ensured the engine is cool. Engine temperatures can remain high for a substantial amount of time after use.



Fitting Instructions

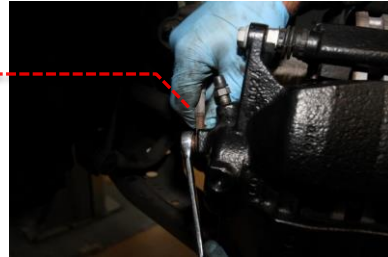
Revo Big Brake Kit 4/6 Pot Caliper 332/355/380 Disc

Fitting Difficulty

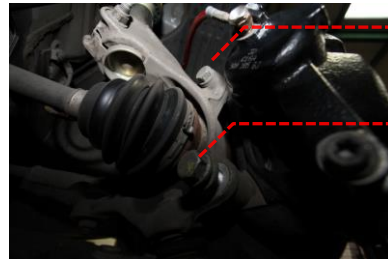


Dealer Fit Recommended

- 1 Clamp brake hose and remove from caliper.



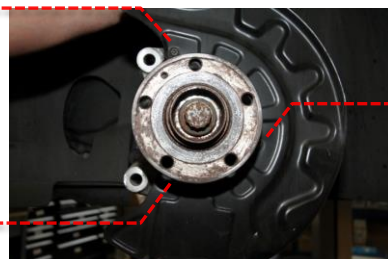
- 2 Remove the 2 x 21, 22 or 24mm bolts holding the caliper carrier in place and remove complete unit.



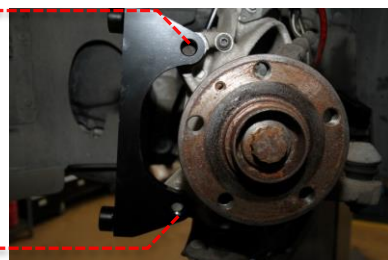
- 3 Remove OE disc using T30 torx driver.



- 4 Remove the 3 x T30 torx bolts holding the backing plate in place and remove.



- 5 Bolt the new brake bracket to the hub assembly using the two bolts you removed in step 2 and torque to 130Nm.



Fitting Instructions

Revo Big Brake Kit 4/6 Pot Caliper 332/355/380 Disc

Fitting Difficulty



Dealer Fit Recommended

- 6 Bolt the new disc to hub, clean disc surface to ensure no grease is on it using brake cleaner.

Note: The discs are directional and must be fitted to the correct side. To assist with installation the disc is marked with an arrow showing the correct direction of rotation.



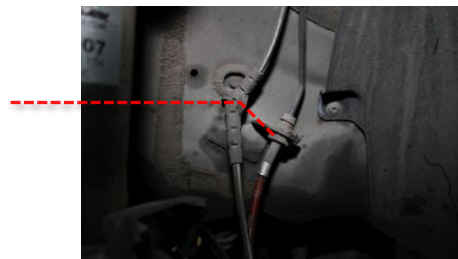
- 7 Fit the new pads into the Revo caliper. Remove the blue tape from back of pad and install the pads with the sticky side facing the piston.



- 8 Install the new Revo caliper to the bracket with the bolts and washers provided using a 10mm hex socket and torque to 95Nm.



- 9 Remove the OE brake hose from the car using 11mm spanner and install the new Revo brake hose. If any brake fluid is spilt be sure to clean it up immediately as it can be corrosive.



- 10 Bleed the brakes and check for leaks. Clean the discs with brake cleaner to ensure no fluid is on them.
- Refit all OE parts back to vehicle. Reinstallation is the reverse of removal. Follow any factory torque specification during reinstallation of OE parts. Test drive the vehicle to ensure there are no leaks/part interference during operation. Your installation is now complete!

